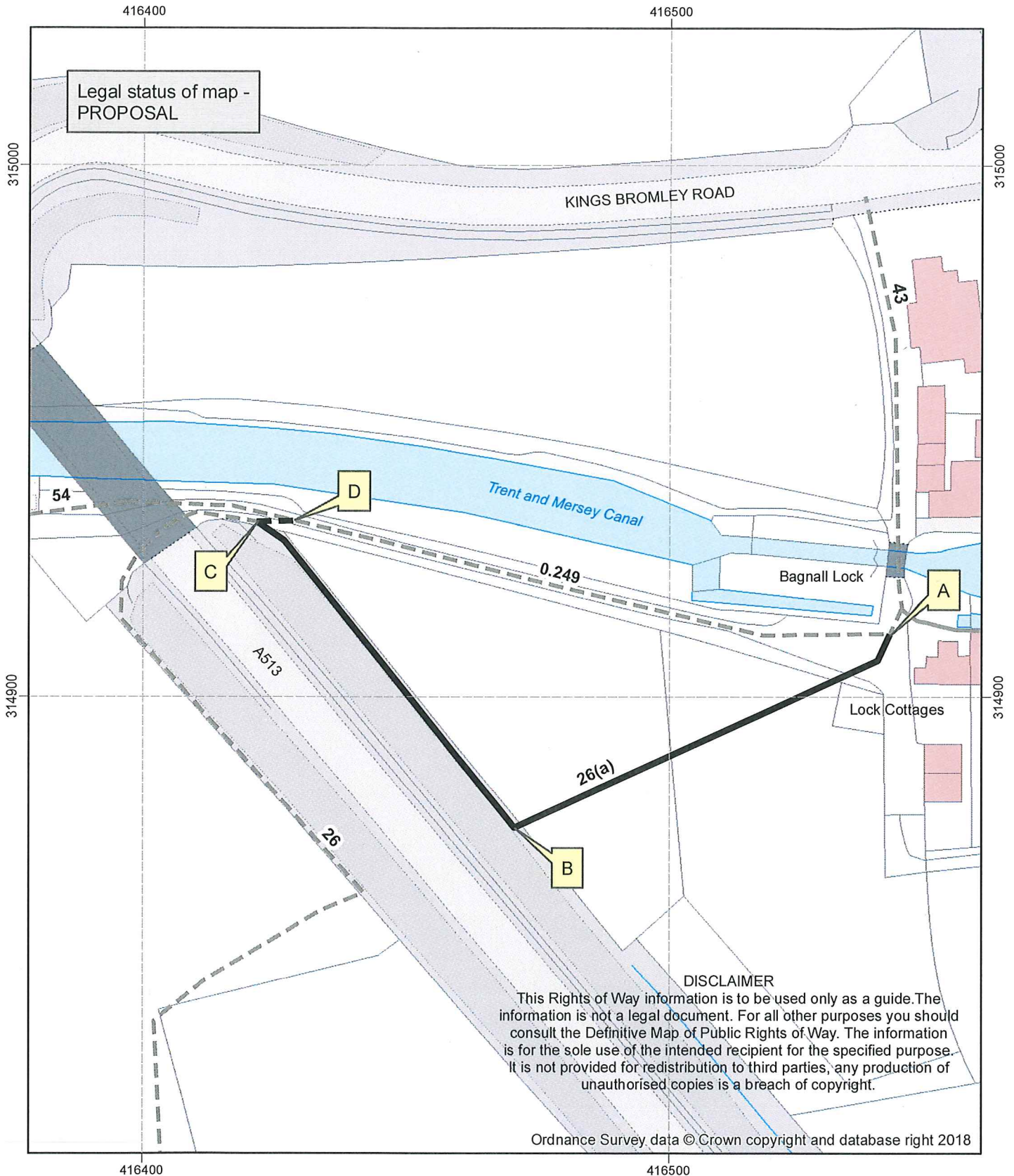


PROPOSED Diversion of Public Footpath  
No. 26(a) (part) Alrewas Parish.



Map created at the scale of 1:1000  
(facsimiles may vary)

© Crown Copyright and database rights 2019.  
Ordnance Survey 100019422. You are not permitted to copy, sub-license, distribute or sell any of this data to third parties in any form. Use of this data is subject to the terms and conditions shown at [www.staffordshire.gov.uk/maps](http://www.staffordshire.gov.uk/maps). Produced by Staffordshire County Council, 09/09/2019.

- Path to be extinguished (A - B - C).
- - - Path to be created (C - D).
- Rights of Way Unaffected
- - - Footpath